

arizona california colorado idaho montana nevada new mexico utah wyoming

SOURCES + DESIGN

Premier Industry Publication for Designers, Architects, Landscape Professionals and Builders in the West

MAY/JUNE 2008

MODERN LIVING

Residential Designs in Utah, Montana and Arizona Explore a Softer Side of Modernism

SALUTE TO THE SUN

Marmol Radziner and Associates
Creates an Eco-Friendly Yoga Studio
in Los Angeles

SANTA FE ARCHITECT ED MAZRIA AND ARCHITECTURE 2030

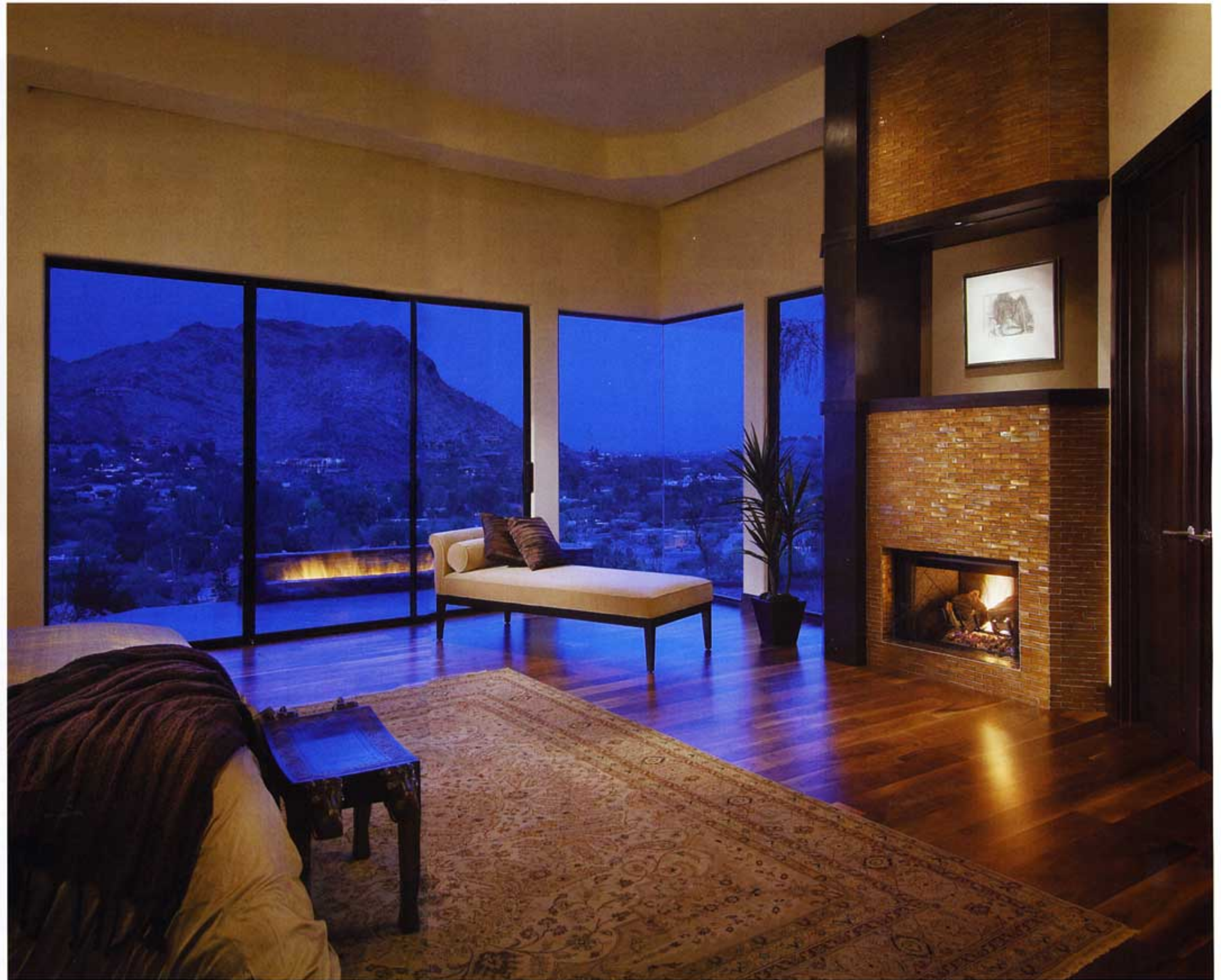
Denver and Scottsdale Showrooms
You Should Know About

PERMIT NO. 824
PHOENIX, AZ
PAID
U.S. POSTAGE
PSNET STD

MIXED METAPHORS

PARADISE VALLEY, ARIZONA |
CLAIRE OWNBY, ASID | OWNBY DESIGN |
SCOTTSDALE, ARIZONA

Photography by Mark Boisclair



Right: A restrained touch in the master bedroom keeps the focus on views, as does a low firepit. A television is hidden in a void above the glass-tiled fireplace. When in use, it slides down over the artwork.
Top: A curved soffit detail adds interest to the library ceiling.
Above: Framing details lend the living room a formal look and highlight Oriental artworks. The fireplace opens on the opposite side to the family room.



With a thoughtful approach, Ownby created an elegant, understated interior, rich in details without resorting to fussiness.

Above: A splash of yellow enlivens the family room, where a collection of tribal art is displayed.
Opposite: An angled vanity and floating mirror lead from the master bedroom into the bath.



Interior designer Claire Ownby

faced a few design challenges recently when working on a residential project in Paradise Valley, Arizona. "We came in at mid-construction," says Ownby, who is known for a deft touch with architectural details. "The amount of changes we could make was limited." Additionally, the homeowners, a couple with grown children, asked Ownby to incorporate two distinct and seemingly disparate collections—Oriental and tribal art—within the home.

With a thoughtful approach, Ownby created an elegant, understated interior, rich in details without resorting to fussiness.

The 6,500-square-foot mountainside home was based on an open floorplan, with a master suite and library flanking the public spaces to one side and three guest suites on the other. "I would say that the architectural style is a soft contemporary," explains Ownby, who worked on the project with Lindsey Schultz, Allied Member ASID, from her office.

Despite the fact that construction was well underway, Ownby did manage to impart a strong statement on the interior, detailing flooring, the color palette, fireplaces, finishes, cabinetry, soffits and more. The designer suggested using a pillow-cut travertine flooring throughout much of the home, which segues into black walnut flooring for the master suite and library. A taupe hue, interspersed with splashes of color, was chosen for the walls.

For a two-sided fireplace that faces both living room and family room, Ownby had the living room side framed in espresso-stained maple, creating a more formal look, and used the same wood for shelving and cabinetry on the family room side, giving the space a more intimate, informal ambiance. She clad the fireplace opening on both sides with a stone mosaic tile. A fireplace in the bedroom was clad in iridescent glass mosaic tile.

In the master bath, the designer angled a floating van-

ity and mirror into the room, creating a dramatic entrance into the room, which was finished with espresso-stained cabinetry and marble countertops.

The designer also created a long, low firepit for the patio outside the master suite. "We didn't want to block the view from the room," Ownby explains, "so we kept everything low to the ground." Another ingenious touch for the master bedroom was a motorized television, which comes down from a void in the ceiling to viewing level. When the television is up, a framed piece of artwork takes center stage in the void. Ceilings, too, received attention, such as an oval soffit design, highlighted with rope lighting, for the library.

Ownby worked closely with the wife to incorporate many pieces of existing furniture into the home, as well as to use both the Oriental and tribal artworks appropriately. Ownby underscored most furniture groupings with a series of subtly colored and patterned Oriental rugs, then selectively placed the furnishings—a mix of traditional, contemporary and Asian-influenced pieces—within each room. Neutral fabrics and rich wood finishes link the furniture to the interior. Ownby placed many tribal pieces in the library and grouped numerous Oriental pieces in the living room.

"We tried to keep everything as simple as possible," says Ownby. "We also kept the rooms spacious, not filled with furniture and art. That's how the mix worked—with a little bit of space around each piece." ■

Interior design: Ownby Design, 7720 E. Redfield Road, Scottsdale, AZ 85260; (480) 575-8448 or www.ownbydesign.com.

Travertine flooring: Arizona Tile, numerous locations, www.arizonatile.com.

Oriental rugs: Azadi Fine Rugs, numerous locations, www.azadi finerugs.com.

Plants: Botanical Elegance, 15475 N. Greenway-Hayden Loop, Scottsdale, AZ 85260; (480) 991-9909; 1121 W. Warner Road, Tempe, AZ 85284; (480) 705-0882; www.botanicalelegance.com.