

# LUXE

THE ARIZONA HOME REDEFINED™



\$ 6.95

83>



A SANDOW MEDIA PUBLICATION

PREMIER ISSUE



# OWNBY DESIGN

13825 NORTH NORTHSIGHT BOULEVARD, SUITE A120 SCOTTSDALE, AZ CLAIRE@OWNBYDESIGN.COM OWNBYDESIGN.COM 480.575.8448



Claire Ownby, Principal

<b>YEAR ESTABLISHED</b>	1999	<b>AFFILIATIONS</b>	ASID, NCIDQ
<b>MEDIAN PRICE OF HOMES COMPLETED</b>	\$2.5 MILLION		
<b>OFFICE LOCATIONS</b>	SCOTTSDALE, AZ, AND KONA, HI		

Claire Ownby translates her admiration for refined, one-of-a-kind homes into a thriving interior design firm that embraces her zeal for quality, innovation and craftsmanship. "I base my designs on the architecture of the site to ensure a cohesive project," says Ownby, who enjoys blending natural, organic materials with cutting-edge technology to transform everyday spaces into thoughtful, fresh indulgences. "We tend to incorporate clean lines and neutral color palettes, along with textured fabrics and organic materials, adhering to a modern, 21st-century design style." As part of the creative process, Ownby and her talented team of design professionals educate clients on the many ways they can be environmentally responsible without sacrificing aesthetic quality in their homes. "I believe in leaving behind a positive fingerprint, in regards to style and our impact on the environment, for every project we work on. Artful interior design involves more than just beauty; it provides a higher function, complementing the land, as well as the client's personality." Conscientious and environmentally aware, Ownby is extremely proud of her continued success. In 2007, she won an ASID Designer of the Year Award, and a KB+B Kitchen of the Year Award.

## Q+A

### WHAT ARE THE KEY INFLUENCES IN YOUR WORK TODAY?

The key influences in my work today come from travel. Whether by plane, car or boat, travel seems to be impacting our lifestyles more and more. Similarly, luxury accommodations are advancing technology and lifestyle options, enhancing the way we travel.

### WHAT INSPIRED YOU TO STUDY INTERIOR DESIGN?

I began taking architectural drafting classes in high school and thoroughly enjoyed the applications involved, which inspired me to pursue interior design as a profession.

### WHO HAS MOST INFLUENCED YOUR WORK?

I don't have one person who I can say has most influenced my work. I am more inspired by architects and designers whose incorporation of materials and applications is bold and unique to their particular approach.

### WHAT ARE THE MAIN DETERMINANTS IN YOUR DESIGN PROCESS?

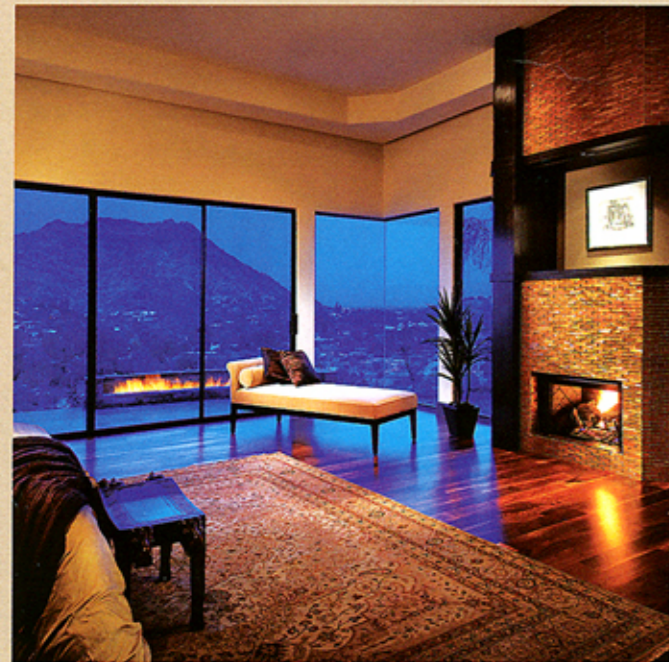
Existing architectural elements, the site location and the initial client interview are the three main factors in my design process.



**LOCATION:** Maui, HI

**SQFT:** 7,000

**FEATURES:** This oceanfront Maui estate was created with entertainment in mind. The main house features four master suites that open onto the ocean, as well as a home theater, three bars and an upstairs mezzanine, which includes a billiard table.



**LOCATION:** Paradise Valley, AZ

**SQFT:** 7,500

**FEATURES:** This contemporary mountainside estate features floor-to-ceiling glass, providing spectacular views. The careful balance of modern materials—such as glass mosaics with organic woods, like natural walnut—give the home the minimal, yet warm, feeling the owner desired.



**LOCATION:** Paradise Valley, AZ

**SQFT:** 13,000

**FEATURES:** This Spanish Mediterranean estate was created for a family to enjoy its zest for life. Plush furnishings and a neutral color scheme create elegant overtones to maximize sophistication.



**LOCATION:** Kona, HI

**SQFT:** 5,500

**FEATURES:** This ocean-view estate resides in the premier community of Hualalai, featuring true indoor-outdoor architecture with individual pods that separate living and bedroom spaces. The furnishings reinforce the modern architecture, maintaining a strong sense of island lifestyle.



**LOCATION:** Scottsdale, Arizona

**SQFT:** 5,500

**FEATURES:** This mountainside estate resides in the exclusive golf community of Estancia. It features desert architecture and panoramic views. The transitional, yet modern, interiors feature limestone and glass mosaics mixed with antiques from the homeowners' travels.